



GABA Transporter 1 Polyclonal Antibody

Catalog No	YP-Ab-12631
Isotype	IgG
Reactivity	Human;Rat;Mouse
Applications	WB;IHC;IF
Gene Name	SLC6A1
Protein Name	Sodium- and chloride-dependent GABA transporter 1 (GAT-1) (Solute carrier family 6 member 1)
Immunogen	Synthetic Peptide of GABA Transporter 1 AA range: 329-379
Specificity	GABA Transporter 1 protein(A230) detects endogenous levels of GABA Transporter 1
Formulation	Liquid in PBS containing 50% glycerol, 0.5% BSA and 0.02% sodium azide.
Source	Polyclonal, Rabbit,IgG
Purification	The antibody was affinity-purified from rabbit antiserum by affinity-chromatography using specific immunogen.
Dilution	WB 1:1000-2000, IHC 1:100-200. IF 1:50-200
Concentration	1 mg/ml
Purity	≥90%
Storage Stability	-20°C/1 year
Synonyms	SLC6A1; GABATR; GABT1; GAT1; Sodium- and chloride-dependent GABA transporter 1; GAT-1; Solute carrier family 6 member 1
Observed Band	67kD
Cell Pathway	Cell membrane; Multi-pass membrane protein. Membrane; Multi-pass membrane protein. Cell junction, synapse, presynapse . Localized at the plasma membrane and in a subset of intracellular vesicles. Localized at the presynaptic terminals of interneurons (By similarity). .
Tissue Specificity	Brain,
Function	domain:The PDZ domain-binding motif is involved in the interaction with MPP5.,function:Terminates the action of GABA by its high affinity sodium-dependent reuptake into presynaptic terminals.,miscellaneous:This protein is the target of psychomotor stimulants such as amphetamines or cocaine.,similarity:Belongs to the sodium:neurotransmitter symporter (SNF) family.,subcellular location:Localized at the plasma membrane and in a subset of intracellular vesicles. Localized at the presynaptic terminals of interneurons.,subunit:Interacts with MPP5.,
Background	The SLC6A1 gene encodes a gamma-aminobutyric acid (GABA) transporter, which removes GABA from the synaptic cleft (Hirunsatit et al., 2009 [PubMed 19077666]).[supplied by OMIM, Jul 2009],



matters needing attention

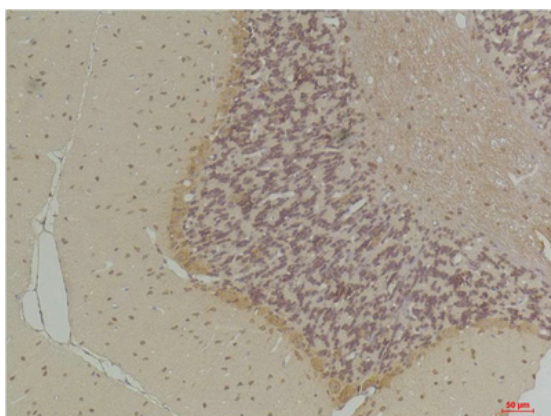
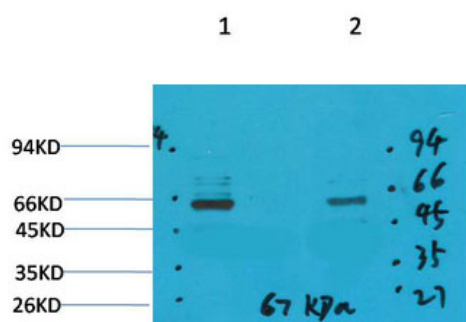
Avoid repeated freezing and thawing!

Usage suggestions

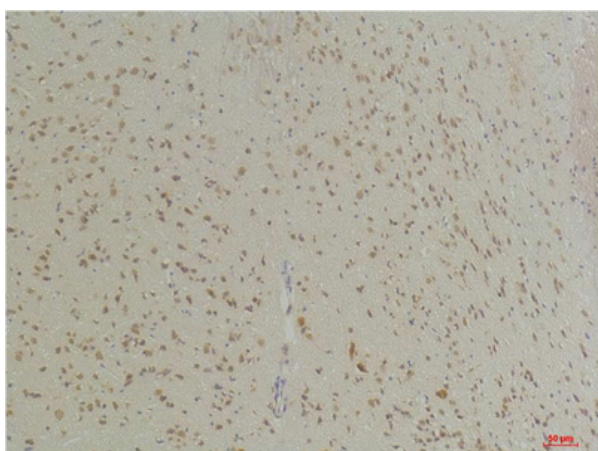
This product can be used in immunological reaction related experiments. For more information, please consult technical personnel.

Products Images

Western blot analysis of 1) Mouse Brain Tissue, 2) Rat Brain Tissue with GABA Transporter 1 Rabbit pAb diluted at 1:2,000.



Immunohistochemical analysis of paraffin-embedded Rat Brain Tissue using GABA Transporter 1 Rabbit pAb diluted at 1:200.



Immunohistochemical analysis of paraffin-embedded Mouse Brain Tissue using GABA Transporter 1 Rabbit pAb diluted at 1:200.